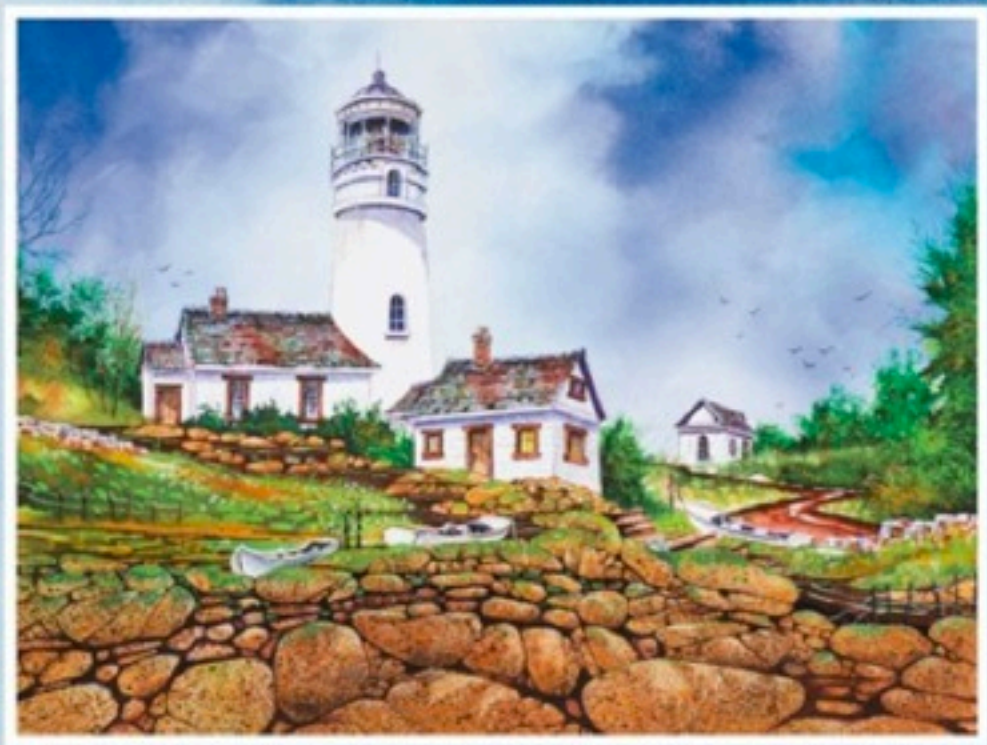


SKILLBUILDER

## Skyscapes: The Sky's the Limit

KEITH SUDDER

A Four-Part Series



SKILLBUILDER

### Part I

I find that most often the sky is what draws the viewer in, setting the mood and serving as the catalyst that evokes emotion. It really is the most important element of a landscape painting's composition.

Is there a color? Are tone and spirit possible to capture within a page, within a frame, or within a dream? I think so, but then I'm an artist, and that's what artists do. I have always believed that the gift of skill is a gift forever—an endless sea of colors and half-awake dreams within the sky. To paint a sky is to breathe the heavens through your eyes and give life to colors you want to complete the circle that we call reality.

As artists, we are gifted people. We have rich imagination attributes working for us—curiosity and the desire to learn. We want to always be looking for that little bit of "something new" to advance our skills. These bits of new can be described as magic moments in design thinking before you've even had a stroke on canvas. It is very exciting to discover something new and give more meaning to those it with the world.

#### DESIGNING THE SKY

Designing a great sky requires an effective composition. I thought I should first address the composition of the sky's elements: the color and the white, as well as much the color that designates the sky's colors are the white or lack of color that has the greatest influence. The design is a lot of the sky designed on the placement of the white, to show where the color goes and the white determines the type of emotion that the viewer will experience.

In this four-part series, I will demonstrate how to design skyscapes. In each article, the practical techniques design will be used, although there will be some variations in order to balance your presentation properly. At different points will be used for each issue.

"I got my Decorative Painter yesterday. You made the cover.. congratulations.. love the design and the whole article is spectacular. Can't wait for each and every one." Sue

### Other Comments

Your lighthouse painting on the cover of The Decorative Painter Magazine is beautiful and the article is very well done.

When I read your article, I was touched by how sensitive you are...how beautifully you express yourself.

When I read the first sentence in your article "is forever a color", I was moved by such a profound statement. Your article was so professionally done.

Your article is the best I've read in the SDP magazine in the last few years.

I read your SDP Article. You are a fantastic writer. You had me at the first sentence.

I loved the beginning of your SDP article; that you would take the time to make it poetic is amazing. It was not only informative; it was meaningful.

Great directions - I can't wait to try this. Lots of information there to use in the future.

It is a terrific article!